

CITY OF ANADARKO

Citywide Trails Master Plan

APPENDIX B

PUBLIC INPUT

Prepared by:



CHISHOLM TRAIL CONSULTING, LLC

Scott Vaughn, P.E. CA 7771
2124 Scott Lane Duncan, Ok 73533
580-467-8130 rscottv11@gmail.com



landscape architecture

Jeff Pugh, PLA ASLA CA02895
4831 West 85th St. Tulsa, Ok 74132
(918) 694-7642 jeff.sobo@gmail.com



CITY OF
Anadarko OK

PUBLIC NOTICE

The City of Anadarko hereby announces that it will hold a Public Meeting to solicit input from all interested persons regarding a proposed Trail Master Plan. Funding for this Trail Master Plan has been received from the Oklahoma Department of Transportation through a grant administered by the Southwestern Oklahoma Regional Transportation Planning Organization. **The Public Meeting will be held from 5:30 p.m. to 6:30 p.m. on Thursday, November 18, 2021 at the Anadarko Community Library, 215 W. Broadway St, Anadarko, OK 73005.** Please notify the Library Director in advance at 405-247-7351 if you or someone you know will need additional accommodations to attend the meeting.

Interested parties will be provided an opportunity to:

1. View maps of Anadarko.
2. Identify points of interest, locations of origination and destinations and trail elements that they would like to see represented in this plan.
3. Answer a brief questionnaire regarding Trail Planning in the community.
4. Discuss Trail Planning concepts with the City and their Consultants, Chisholm Trail Consulting, LLC and StudioScape.

Additional comments submitted in writing will be accepted for 30 days after the date of the Public Meeting and can be sent to the following:

Mr. Kenneth Corn
City Manager
501 West Virginia
Anadarko, Ok 73005

Trail Planning Goals

The City of Anadarko intends to accomplish the following goals with this Planning Effort:

1. Determine interest of citizens in the community in establishing a Trail Master Plan.
2. Determine types of uses for a potential Trail System in Anadarko.
3. Determine locations/points of interest to be connected by Trails.
4. Determine types of Trails and Trail Elements to be included in the Master Plan.

The Trail Master Plan will be used to obtain funding for future construction of Trails in Anadarko.



CHISHOLM TRAIL CONSULTING, LLC





PUBLIC INPUT REQUEST FORM

CITY OF ANADARKO

TRAIL PLANNING

The City of Anadarko intends to develop a Trail Master Plan for the community to identify points of interest, trail locations, trail types and phases for future construction of trails. Please take the time to answer the following questions and return this form within 30 days to:

City of Anadarko
City Manager's Office
501 West Virginia
Anadarko, Ok 73005

(OPTIONAL) Please provide the following information if you wish to be contacted regarding this matter:

NAME: _____ ADDRESS: _____

TELEPHONE NUMBER: _____ E-MAIL ADDRESS: _____

DO YOU WISH TO BE CONTACTED REGARDING THIS PLAN? YES NO

IF YES, HOW DO YOU WISH TO BE CONTACTED? PHONE E-MAIL USPS

(OPTIONAL) Please provide the following information to help us establish demographics of respondents:

AGE: _____ DO YOU HAVE ACCESS TO A VEHICLE? YES NO

RACE: _____ INCOME LEVEL: \$0 to \$25,000 \$25,001 to \$50,000

\$50,001 to \$100,000 more than \$100,001

Please answer the following questions. Feel free to add sheets if necessary.

1. Would you use a Trail System in Anadarko? YES NO

2. Points of Interest you would like to see connected by trails: _____

3. Why would you use the trail system? (e.g., exercise, recreation, school, bicycling, business, shopping, etc.)

4. What types of amenities would you like to see along trails (e.g., Shade, exercise stations, water fountains, community markers/signs, etc.)





PUBLIC INPUT RESPONSE SUMMARY

CITY OF ANADARKO TRAIL PLANNING

City of Anadarko
City Manager's Office
501 West Virginia
Anadarko, Ok 73005

TOTAL MAILED RESONSES - 5

AGE: 85, 23, 62, 61, 52
DO YOU HAVE ACCESS TO A VEHICLE? YES ALL NO
RACE: White (4), Native American (1)
INCOME LEVEL: \$0 to \$25,000
\$25,001 to \$50,000 1
\$50,001 to \$100,000 3
more than \$100,001 1

1. Would you use a Trail System in Anadarko? YES ALL NO
2. Points of Interest you would like to see connected by trails:
Museum 3
Rotary Park 4
Downtown 3
Post Office 1
Randlett Park 3
Schools 1
3. Why would you use the trail system?
Exercise 5
Recreation 3
School 0
Bicycling 2
Business 0
Shopping 1
4. What types of amenities would you like to see along trails (e.g., Shade, exercise stations, water fountains, community markers/signs, etc.)
Water (3), Benches (3), Historical Markers (2), Stores and Restaurants, All the Above Shade, Exercise Stations, Bathrooms, SAFETY

Social Media Reactions

Social Media (Facebook) Followers: **6,665**

Grant Announcement----- Likes 321 - Shares 65 - Comments 33
Public Meeting Announcement----- Likes 96 - Shares 39 - Comments 5
Public Information Forum----- Likes 29 - Shares 14 - Reached 3,477 - Hearts 4



CITY OF ANADARKO

Citywide Trails Master Plan

APPENDIX C TRAIL PLAN EXHIBITS

Prepared by:



CHISHOLM TRAIL CONSULTING, LLC

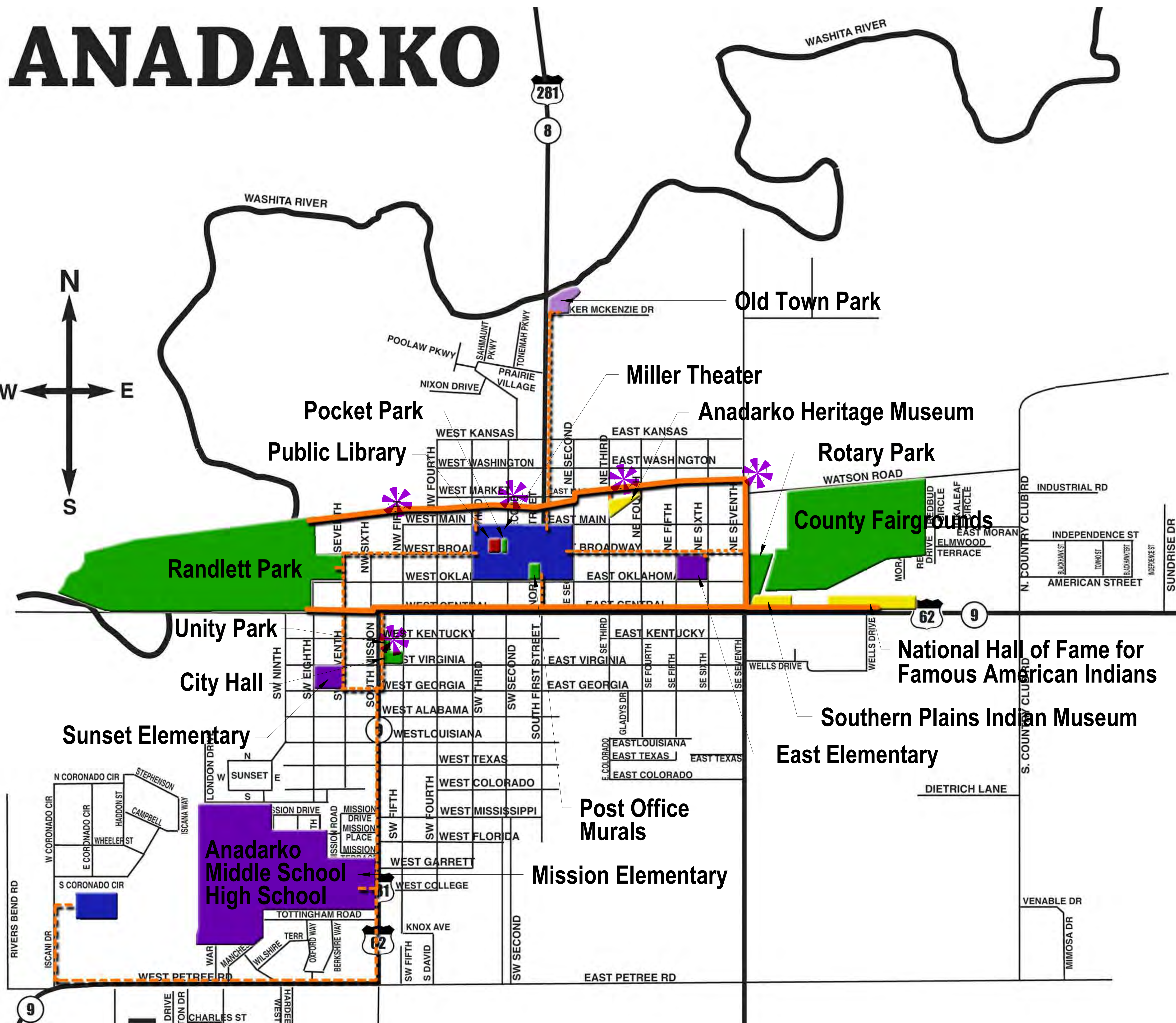
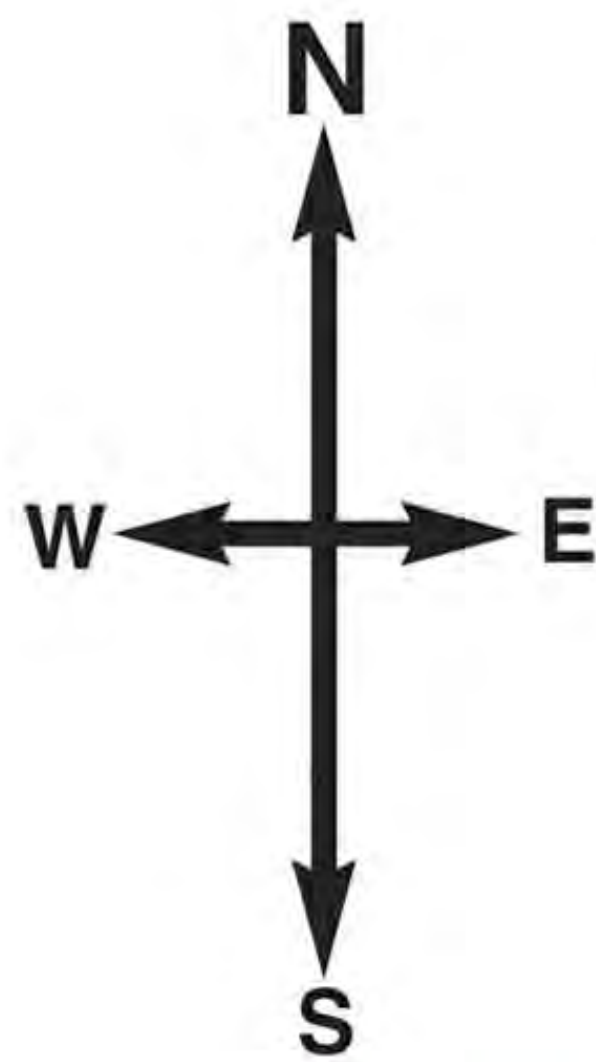
Scott Vaughn, P.E. CA 7771
2124 Scott Lane Duncan, Ok 73533
580-467-8130 rscottv11@gmail.com



landscape architecture

Jeff Pugh, PLA ASLA CA02895
4831 West 85th St. Tulsa, Ok 74132
(918) 694-7642 jeff.sobo@gmail.com

ANADARKO



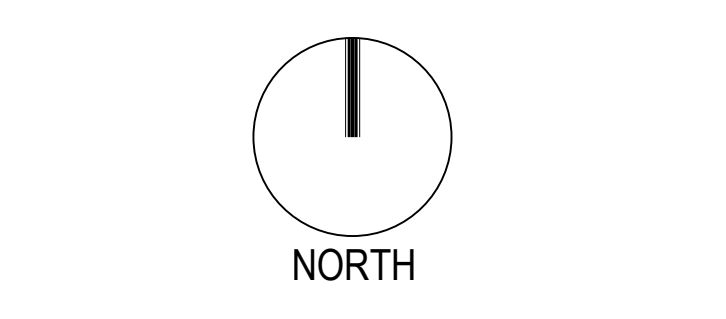
Map Legend

-  Library
-  Parks / Public
-  Museums
-  Downtown - Shopping
Restaurants
-  Schools
-  Trail - Multi Use
-  Trail - Shared
-  Feature Area -
Shade, Rest,
Fitness, Water

Anadarko Trails Study

Anadarko, Oklahoma

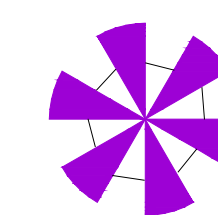
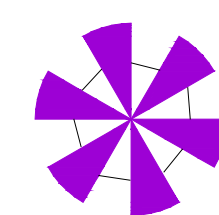
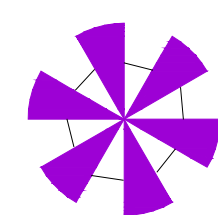
Project	Date



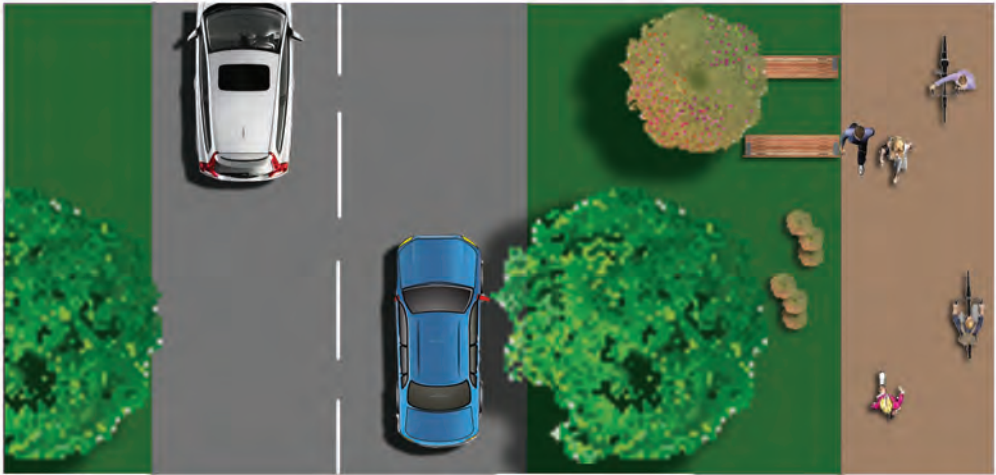
Sheet Title
Citywide Trails Master Plan

Scale: Not to Scale
Drawn: JWP
Checked: JWP
Issue Date: 03/07/22

Sheet #:
L1



THIS DRAWING IS THE PROPERTY OF STUDIO 66, INC. THE DRAWING(S) OR INFORMATION DEPICTED SHALL NOT BE REPRODUCED OR USED WITHOUT WRITTEN PERMISSION OF THE LANDSCAPE ARCHITECT.



**38' Center
Median**

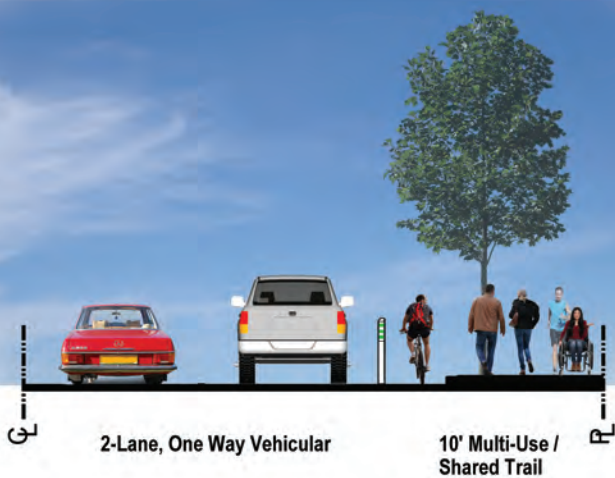
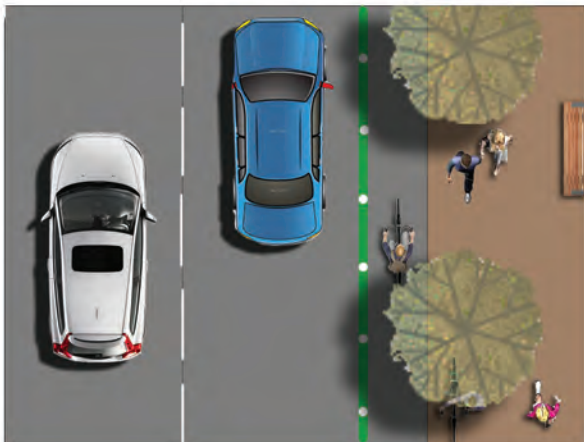
2-Lane, One Way Vehicular

~20' Landscape Buffer

**10' Multi-Use
Trail**

Central Boulevard Use

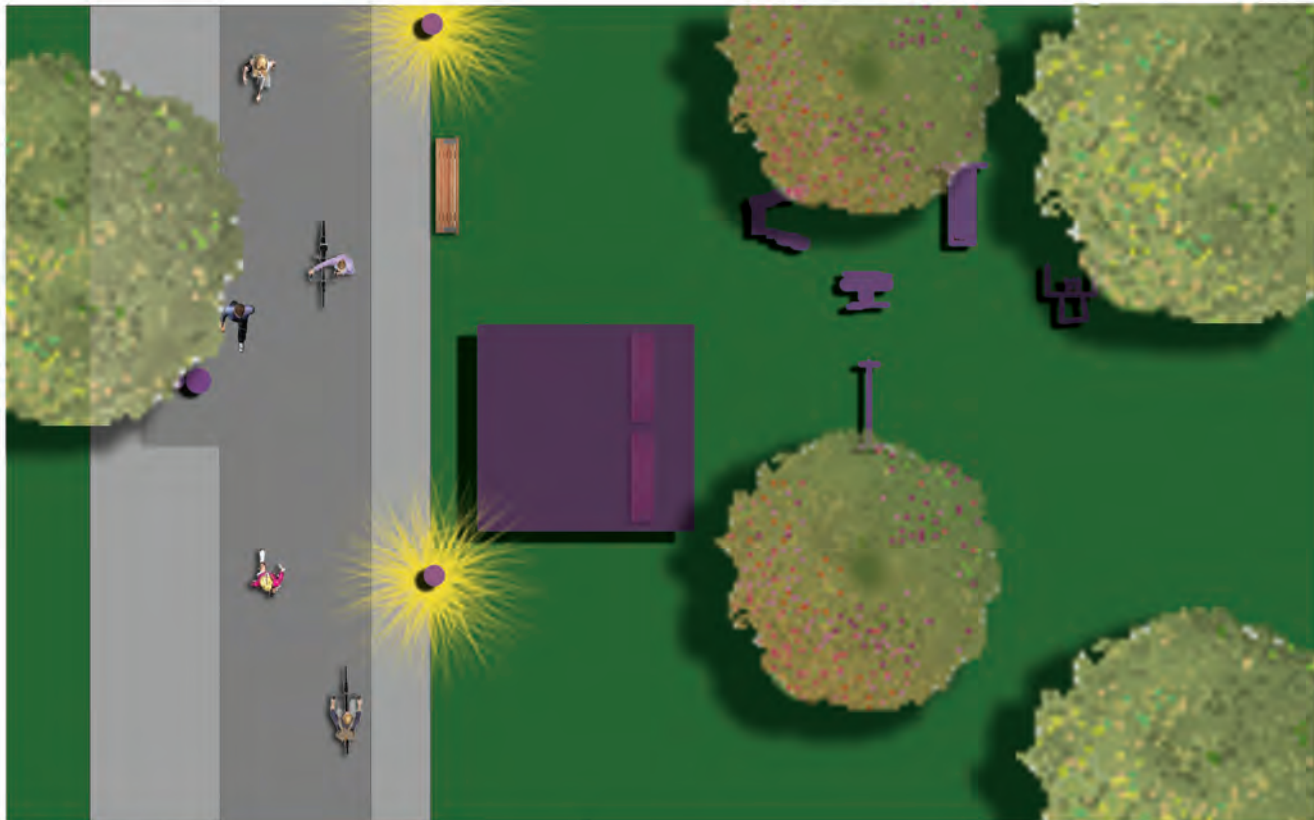
PL



2-Lane, One Way Vehicular

10' Multi-Use /
Shared Trail

Mission Street Use

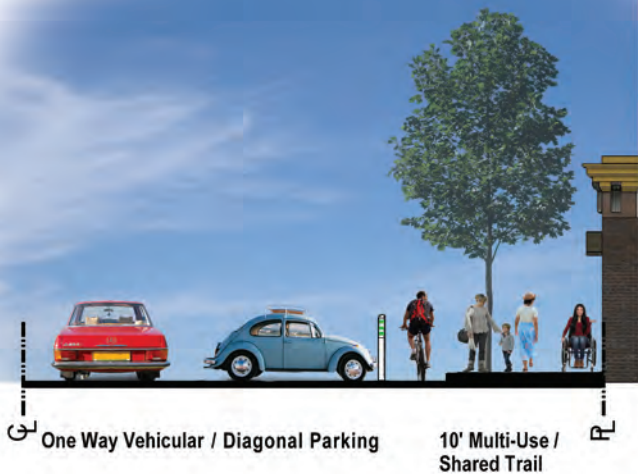
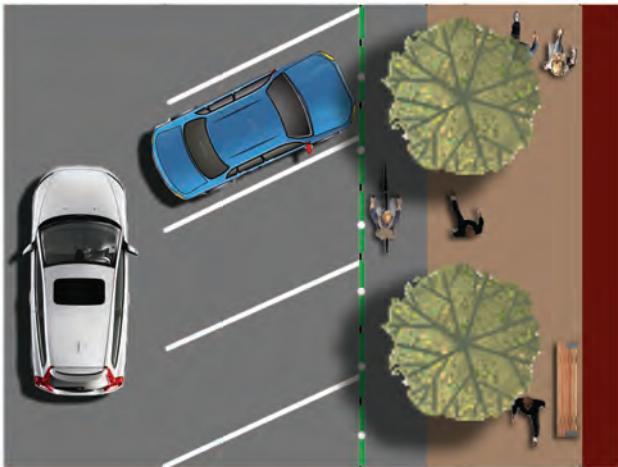


8'-10' Multi-Use Trail

Shade and Rest

Fitness Station

Railway R.O.W Use



One Way Vehicular / Diagonal Parking

10' Multi-Use /
Shared Trail

Downtown Street Use



2-Lane, One Way Vehicular

~15' Landscape Buffer

10' Multi-Use Trail

West Petree Road Use

Pedestrian and Bicycle Funding Opportunities

U.S. Department of Transportation Transit, Highway, and Safety Funds

Updated January 21, 2021

This table indicates potential eligibility for pedestrian and bicycle projects under U.S. Department of Transportation surface transportation funding programs. Additional restrictions may apply. See notes and basic program requirements below, and see program guidance for detailed requirements. Project sponsors should fully integrate nonmotorized accommodation into surface transportation projects. Section 1404 of the Fixing America's Surface Transportation (FAST) Act modified 23 U.S.C. 109 to require federally-funded projects on the National Highway System to consider access for other modes of transportation, and provides greater design flexibility to do so.

Pedestrian and Bicycle Funding Opportunities: U.S. Department of Transportation Transit, Highway, and Safety Funds

Key: \$ = Funds may be used for this activity (restrictions may apply). ~\$ = Eligible, but not competitive unless part of a larger project. \$* = See program-specific notes for restrictions.

Activity or Project Type	BUILD	INFRA	TIFIA	FTA	ATI	CMAQ	HSIP	NHPP	STBG	TA	RTP	SRTS	PLAN	NHTSA 402	NHTSA 405	FLTPP
Access enhancements to public transportation (includes benches, bus pads)	\$	~\$	\$	\$	\$	\$		\$	\$	\$						\$
ADA/504 Self Evaluation / Transition Plan									\$	\$	\$		\$			\$
Bicycle plans				\$					\$	\$		\$	\$			\$
Bicycle helmets (project or training related)									\$	\$\$SRTS		\$		\$*		
Bicycle helmets (safety promotion)									\$	\$\$SRTS		\$				
Bicycle lanes on road	\$	~\$	\$	\$	\$	\$	\$	\$	\$	\$		\$				\$
Bicycle parking	~\$	~\$	~\$	\$	\$	\$		\$	\$	\$	\$	\$				\$
Bike racks on transit	\$	~\$	\$	\$	\$	\$			\$	\$						\$
Bicycle repair station (air pump, simple tools)	~\$	~\$	~\$	\$	\$	\$			\$	\$						\$
Bicycle share (capital and equipment; not operations)	\$	~\$	\$	\$	\$	\$		\$	\$	\$						\$
Bicycle storage or service centers (example: at transit hubs)	~\$	~\$	~\$	\$	\$	\$			\$	\$						\$
Bridges / overcrossings for pedestrians and/or bicyclists	\$	~\$	\$	\$	\$	\$*	\$	\$	\$	\$	\$	\$				\$
Bus shelters and benches	\$	~\$	\$	\$	\$	\$		\$	\$	\$						\$
Coordinator positions (State or local)						\$ 1 per State			\$	\$\$SRTS		\$				
Crosswalks (new or retrofit)	\$	~\$	\$	\$	\$	\$*	\$	\$	\$	\$	\$	\$				\$
Curb cuts and ramps	\$	~\$	\$	\$	\$	\$*	\$	\$	\$	\$	\$	\$				\$
Counting equipment				\$	\$		\$	\$	\$	\$	\$	\$	\$*			\$
Data collection and monitoring for pedestrians and/or bicyclists				\$	\$		\$	\$	\$	\$	\$	\$	\$*			\$
Historic preservation (pedestrian and bicycle and transit facilities)	\$	~\$	\$	\$	\$				\$	\$						\$
Landscaping, streetscaping (pedestrian and/or bicycle route; transit access); related amenities (benches, water fountains); generally as part of a larger project	~\$	~\$	~\$	\$	\$			\$	\$	\$						\$
Lighting (pedestrian and bicyclist scale associated with pedestrian/bicyclist project)	\$	~\$	\$	\$	\$		\$	\$	\$	\$	\$	\$				\$
Maps (for pedestrians and/or bicyclists)				\$	\$	\$			\$	\$		\$	\$*			
Paved shoulders for pedestrian and/or bicyclist use	\$	~\$	\$			\$*	\$	\$	\$	\$		\$				\$
Pedestrian plans				\$					\$	\$		\$	\$			\$
Recreational trails	~\$	~\$	~\$						\$	\$	\$					\$
Road Diets (pedestrian and bicycle portions)	\$	~\$	\$				\$	\$	\$	\$						\$
Road Safety Assessment for pedestrians and bicyclists							\$		\$	\$			\$			\$
Safety education and awareness activities and programs to inform pedestrians, bicyclists, and motorists on ped/bike safety									\$\$SRTS	\$\$SRTS		\$	\$*	\$*	\$*	
Safety education positions									\$\$SRTS	\$\$SRTS		\$		\$*		

Pedestrian and Bicycle Funding Opportunities: U.S. Department of Transportation Transit, Highway, and Safety Funds

Key: \$ = Funds may be used for this activity (restrictions may apply). ~\$ = Eligible, but not competitive unless part of a larger project. \$* = See program-specific notes for restrictions.

Activity or Project Type	BUILD	INFRA	TIFIA	FTA	ATI	CMAQ	HSIP	NHPP	STBG	TA	RTP	SRTS	PLAN	NHTSA <u>402</u>	NHTSA <u>405</u>	FLTTP
Safety enforcement (including police patrols)									\$SRTS	\$SRTS		\$		\$*	\$*	
Safety program technical assessment (for peds/bicyclists)									\$SRTS	\$SRTS		\$	\$*	\$		
Separated bicycle lanes	\$	~\$	\$	\$	\$	\$	\$	\$	\$	\$		\$				\$
Shared use paths / transportation trails	\$	~\$	\$	\$	\$	\$*	\$	\$	\$	\$	\$	\$				\$
Sidewalks (new or retrofit)	\$	~\$	\$	\$	\$	\$	\$	\$	\$	\$	\$	\$				\$
Signs / signals / signal improvements (including accessible pedestrian signals)	\$	~\$	\$	\$	\$	\$	\$	\$	\$	\$		\$				\$
Signed pedestrian or bicycle routes	\$	~\$	\$	\$	\$	\$		\$	\$	\$		\$				\$
Spot improvement programs	\$	~\$	\$	\$			\$	\$	\$	\$	\$	\$				\$
Stormwater impacts related to pedestrian and bicycle projects	\$	~\$	\$	\$	\$		\$	\$	\$	\$	\$	\$				\$
Traffic calming	\$	~\$	\$	\$			\$	\$	\$	\$		\$				\$
Trail bridges	\$	~\$	\$			\$*	\$	\$	\$	\$	\$	\$				\$
Trail construction and maintenance equipment									\$RTP	\$RTP	\$					
Trail/highway crossings and intersections	\$	~\$	\$			\$*	\$	\$	\$	\$	\$	\$				\$
Trailside and trailhead facilities (includes restrooms and water, but not general park amenities; see program guidance)	~\$*	~\$*	~\$*						\$*	\$*	\$*					\$
Training						\$	\$		\$	\$	\$	\$	\$*	\$*		
Training for law enforcement on ped/bicyclist safety laws									\$SRTS	\$SRTS		\$			\$*	
Tunnels / undercrossings for pedestrians and/or bicyclists	\$	~\$	\$	\$	\$	\$*	\$	\$	\$	\$	\$	\$				\$

Abbreviations

ADA/504: Americans with Disabilities Act of 1990 / Section 504 of the Rehabilitation Act of 1973
BUILD: Better Utilizing Investments to Leverage Development Transportation Discretionary Grants
INFRA: Infrastructure for Rebuilding America Discretionary Grant Program
TIFIA: Transportation Infrastructure Finance and Innovation Act (loans)
FTA: Federal Transit Administration Capital Funds
ATI: Associated Transit Improvement (1% set-aside of FTA)
CMAQ: Congestion Mitigation and Air Quality Improvement Program
HSIP: Highway Safety Improvement Program
NHPP: National Highway Performance Program
STBG: Surface Transportation Block Grant Program

TA: Transportation Alternatives Set-Aside (formerly Transportation Alternatives Program)
RTP: Recreational Trails Program
SRTS: Safe Routes to School Program / Activities
PLAN: Statewide Planning and Research (SPR) or Metropolitan Planning funds
NHTSA 402: State and Community Highway Safety Grant Program
NHTSA 405: National Priority Safety Programs (Nonmotorized safety)
FLTTP: Federal Lands and Tribal Transportation Programs (Federal Lands Access Program, Federal Lands Transportation Program, Tribal Transportation Program, Nationally Significant Federal Lands and Tribal Projects)

Cross-cutting notes

- FHWA Bicycle and Pedestrian Guidance: http://www.fhwa.dot.gov/environment/bicycle_pedestrian/
- **Applicability of 23 U.S.C. 217(i) for Bicycle Projects:** 23 U.S.C. 217(i) requires that bicycle facilities “be principally for transportation, rather than recreation, purposes”. However, sections 133(b)(6) and 133(h) list “recreational trails projects” as eligible activities under STBG. Therefore, the requirement in 23 U.S.C. 217(i) does not apply to recreational trails projects (including for bicycle use) using STBG funds. Section 217(i) continues to apply to bicycle facilities other than trail-related projects, and section 217(i) continues to apply to bicycle facilities using other Federal-aid Highway Program funds (NHPP, HSIP, CMAQ). The transportation requirement under section 217(i) is applicable only to bicycle projects; it does not apply to any other trail use or transportation mode.
- There may be occasional DOT or agency incentive grants for specific research or technical assistance purposes.
- Aspects of DOT initiatives may be eligible as individual projects. Activities above may benefit safe, comfortable, multimodal networks; environmental justice; and equity.

Program-specific notes: Federal-aid funding programs have specific requirements that projects must meet, and eligibility must be determined on a case-by-case basis.

- BUILD: Subject to annual appropriations. See <https://www.transportation.gov/BUILDgrants> for details.
- INFRA: See <https://www.transportation.gov/buildamerica/infragrants> for details. Focus on projects that generate national or regional economic, mobility, and safety benefits.
- TIFIA: Program offers assistance only in the form of secured loans, loan guarantees, or standby lines of credit, but can be combined with other grant sources, subject to total Federal assistance limitations.
- FTA/ATI: Project funded with FTA transit funds must provide access to transit. See [Bicycles and Transit](#) and the FTA Final Policy Statement on the [Eligibility of Pedestrian and Bicycle Improvements under Federal Transit Law](#).
 - Bicycle infrastructure plans and projects funded with FTA funds must be within a 3-mile radius of a transit stop or station, or if further than 3 miles, must be within the distance that people could be expected to safely and conveniently bike to use the particular stop or station.
 - Pedestrian infrastructure plans and projects funded with FTA funds must be within a ½ mile radius of a transit stop or station, or if further than ½ mile, must be within the distance that people could be expected to safely and conveniently walk to use the particular stop or station.
 - FTA funds cannot be used to purchase bicycles for bike share systems.
 - FTA encourages grantees to use FHWA funds as a primary source for public right-of-way projects.
- CMAQ projects must demonstrate emissions reduction and benefit air quality. See the CMAQ guidance at www.fhwa.dot.gov/environment/air_quality/cmaq/ for a list of projects that may be eligible for CMAQ funds. Several activities may be eligible for CMAQ funds as part of a bicycle and pedestrian-related project, but not as a highway project. CMAQ funds may be used for shared use paths, but may not be used for trails that are primarily for recreational use.
- HSIP projects must be consistent with a State's [Strategic Highway Safety Plan](#) and (1) correct or improve a hazardous road location or feature, or (2) address a highway safety problem.
- NHPP projects must benefit National Highway System (NHS) corridors.
- STBG and TA Set-Aside: Activities marked "\$SRTS" means eligible only as an SRTS project benefiting schools for kindergarten through 8th grade. Bicycle transportation nonconstruction projects related to safe bicycle use are eligible under STBG, but not under TA (23 U.S.C. 217(a)).
- RTP must benefit recreational trails, but for any recreational trail use. RTP projects are eligible under TA and STBG, but States may require a transportation purpose.
- SRTS: FY 2012 was the last year for SRTS funds, but SRTS funds are available until expended.
 - Planning funds must be used for planning purposes, for example: Maps: System maps and GIS; Safety education and awareness: for transportation safety planning; Safety program technical assessment: for transportation safety planning; Training: bicycle and pedestrian system planning training.
- Federal Lands and Tribal Transportation Programs (FLTTP) projects must provide access to or within Federal or tribal lands:
 - Federal Lands Access Program (FLAP): Open to State and local entities for projects that provide access to or within Federal or tribal lands.
 - Federal Lands Transportation Program: For Federal agencies for projects that provide access within Federal lands.
 - Tribal Transportation Program: available for federally-recognized tribal governments for projects within tribal boundaries and public roads that access tribal lands.
- NHTSA 402 project activity must be included in the State's Highway Safety Plan. Contact the State Highway Safety Office for details: <http://www.ghsa.org/html/about/shsos.html>
- NHTSA 405 funds are subject to State eligibility, application, and award. Project activity must be included in the State's Highway Safety Plan. Contact the State Highway Safety Office for details: <http://www.ghsa.org/html/about/shsos.html>